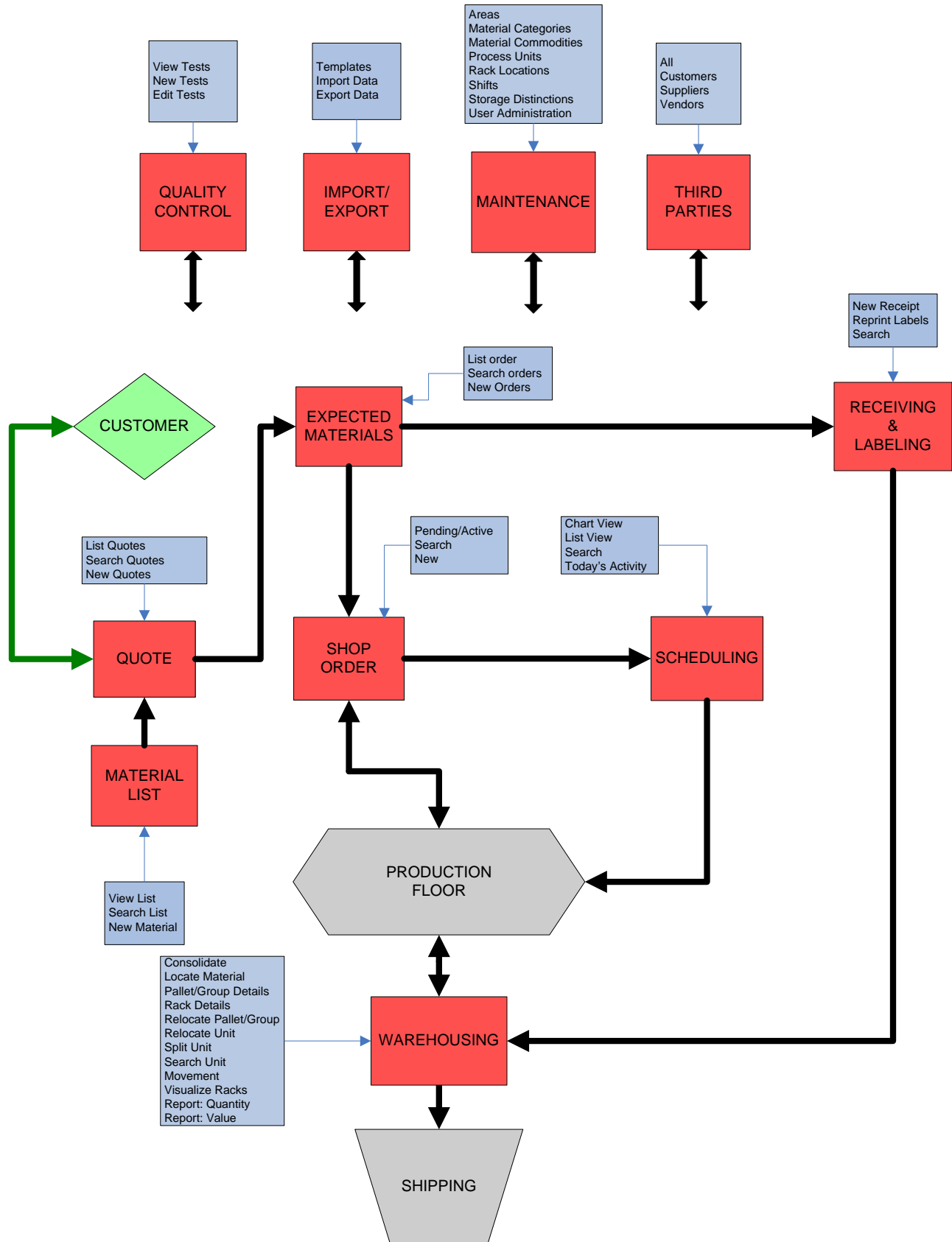


ELEMCO SHOP FLOOR™ FLOWCHART





ELEMCO SHOP FLOOR™ FLOWCHART

In order to utilize any of the features of Elemco Shop Floor™ initial data elements will need to be defined.

[Areas](#) - Maintain a list of the various areas of the facility.

[Material Categories](#) - Maintain a list of the most general material categories.

[Material Commodities](#) - Maintain a list of the specific material commodity groups.

[Process Units](#) - The list of available process units used by this facility.

[Process Unit Types](#) - The list of available process unit types used by this facility.

[Qc Sample Plans](#) - Maintain a list of the qc sample plans of the facility.

[Qc Test Plans](#) - Maintain a list of the qc test plans of the facility.

[Rack Locations](#) - Maintain a list of all useable rack locations within the facility.

[Shifts](#) - Set up shifts during which jobs can run.

[Storage Distinctions](#) - Maintain a list of storage distinctions (e.g. hazardous, refrigerated). These distinctions will be used as possible storage restrictions for materials and finished goods and as storage capabilities for rack locations.

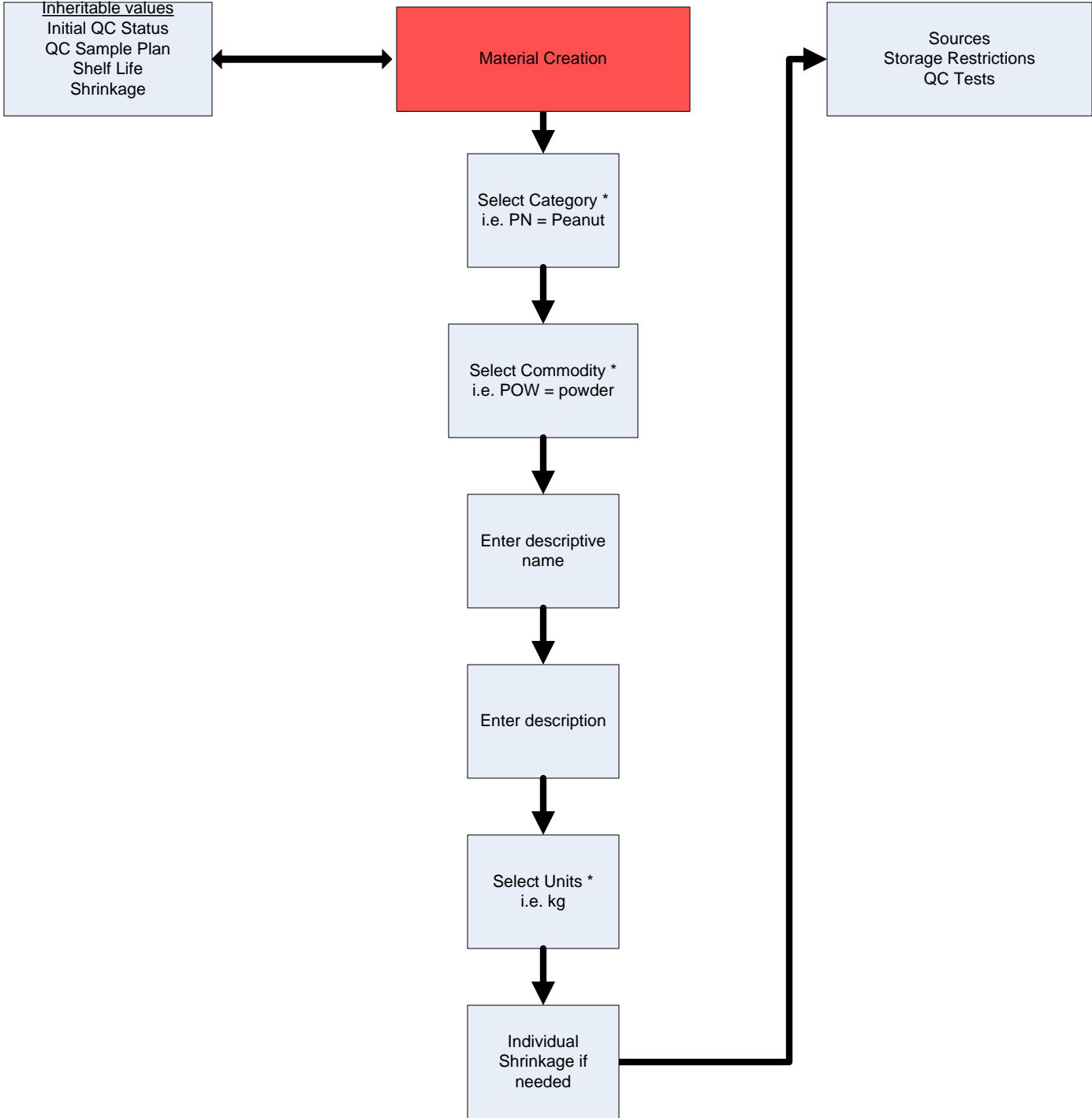
[Third Parties](#) - Search the list of customers, suppliers, and vendors/manufacturers.

[User Administration](#) - Create and maintain user accounts that can access ESF.

ELEMCO SHOP FLOOR™ FLOWCHART

Material Creation

It is important to create "Materials" for use in ESF Order Processing. Correct designation and categorization of Materials will help to determine the rules of processing.

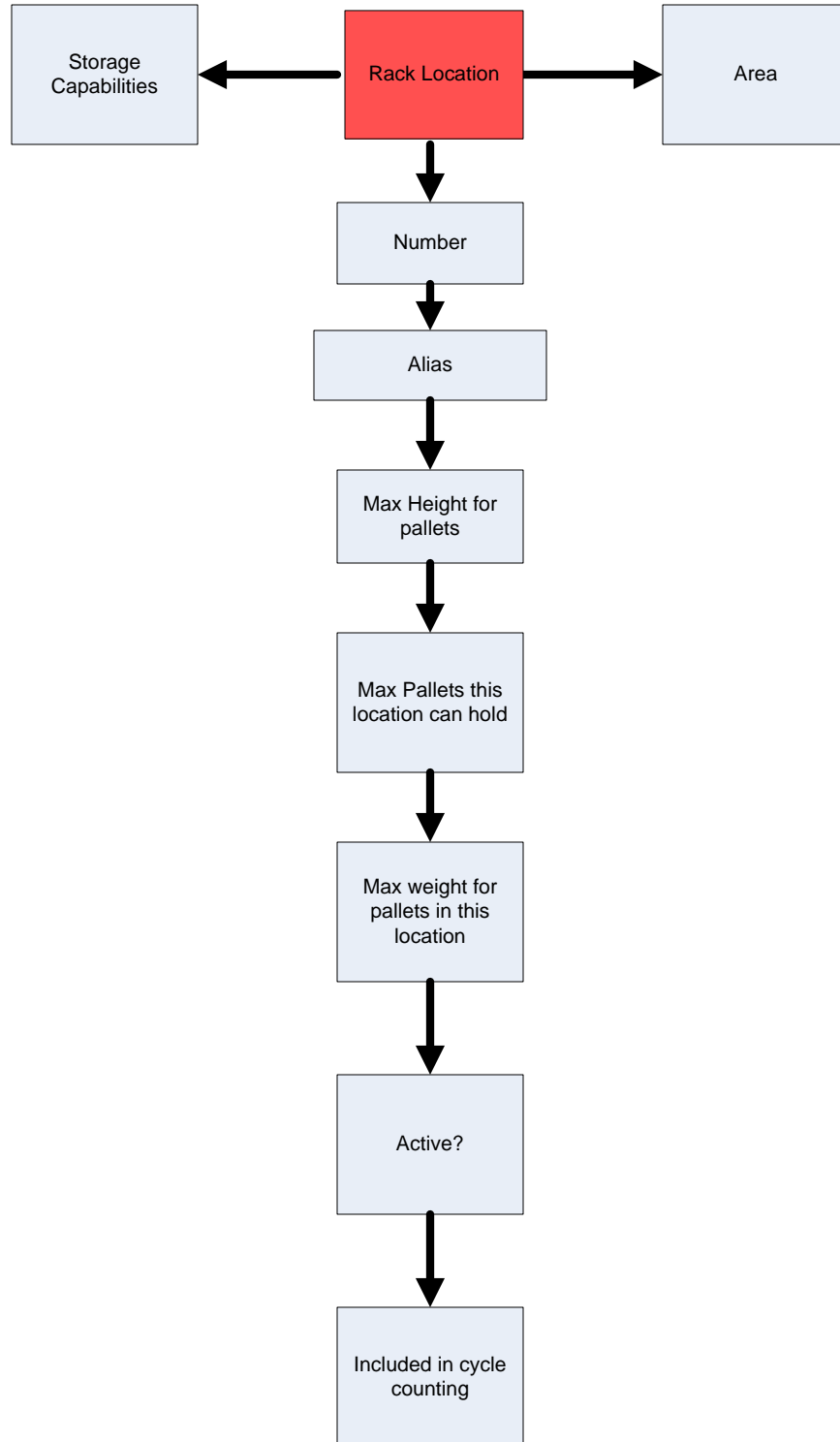


* Data derived from Initial Data Setup

ELEMCO SHOP FLOOR™ FLOWCHART

Rack Locations

It is important to create "Rack Locations" for use in ESF Order Processing. Correct designation and categorization of "Rack Locations" will help to determine the rules of processing.

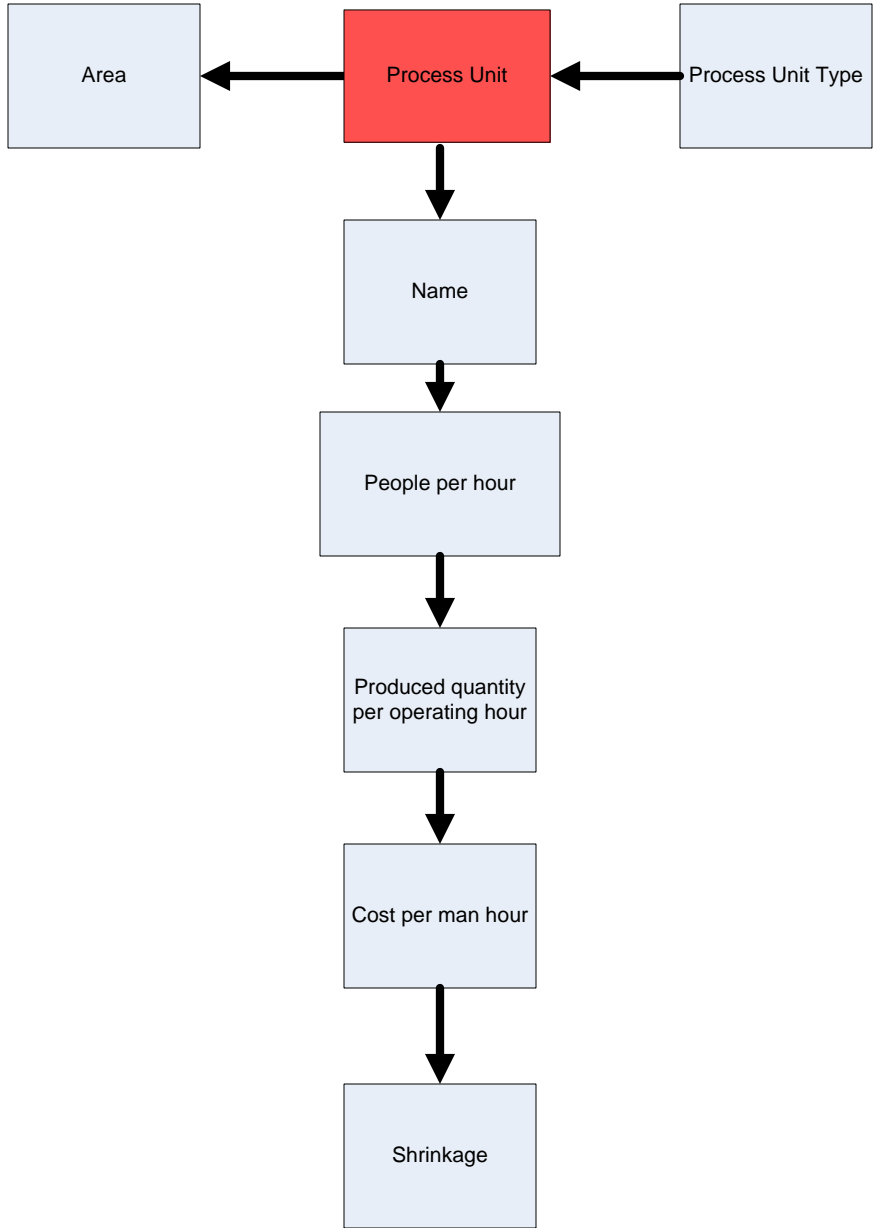


* Data derived from Initial Data Setup

ELEMCO SHOP FLOOR™ FLOWCHART

Process Units

It is important to create "process units" for use in ESF Order Processing. Correct designation and categorization of "process units" will help to determine the rules of processing. Process Unit Type is the "Place Holder" that can be used in the quoting process.



* Data derived from Initial Data Setup

ELEMCO SHOP FLOOR™ FLOWCHART

Quality Control

